

2/2-way valves DN 8 to DN 25

for neutral steamy and liquid fluids

Indirectly solenoid actuated

Piston valves

Internal threads G 1/4 to G 1 or 1/4" NPT to 1" NPT

Operating pressure 1 to 25 bar

+200 °C
25 bar
Click-on®

85320
85330

Description (standard valve)

Solenoid valve for e.g. hotwater and steam

Switching function :	Normally closed
Flow direction :	determined
Fluid temperature :	-10 °C up to max. +200 °C
Ambient temperature :	-10 °C up to max. +50 °C; if solenoid mounting position vertical underneath, temperature max. +60 °C
Mounting position :	optional, preferably solenoid vertical on top

Material

Body :	Brass
Seat seal :	PTFE
Internal parts :	Stainless steel, FPM, PTFE

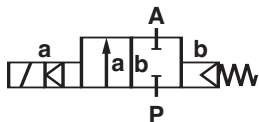
For contaminated fluids insertion of a strainer is recommended (see accessories).



Features

- Compact piston valve
- High flow rate
- Damped operation
- Simple compact design
- Solenoid in Click-on® design
- Stainless steel piston bushing

Symbol



Ordering information

To order, quote model number from table overleaf, e.g. 8532000.9152 for a G 1/4 valve with standard solenoid.

Characteristic data

See page 2 valve and solenoid informations

Detmolder Strasse 256
D-32545 Bad Oeynhausen

PO Box 10 02 52-53
D-32502 Bad Oeynhausen

Phone ++49 5731 / 791-0
Fax ++49 5731 / 791-179

<http://www.buschjost.com>
mail@buschjost.de

Characteristic data

Valves

Part Number. with DC or AC solenoid	Nominal Diameter (mm)	Port Size	Valve Length (mm)	Operating Pressure *		kv-Value ** (Base m ³ /h)	Weight (kg)
				min	max (bar)		
8532000.9152 8533000.9152	8	G 1/4 1/4" NPT	60	1	25	2,2	0,83
8532100.9152 8533100.9152	10	G 3/8 3/8" NPT	60	1	25	3,4	0,82
8532200.9152 8533200.9152	12	G 1/2 1/2" NPT	67	1	25	4,4	0,85
8532300.9152 8533300.9152	20	G 3/4 3/4" NPT	80	1	25	7,0	1,25
8532400.9152 8533400.9152	25	G 1 1" NPT	95	1	25	10,5	1,70

* with gaseous and liquid fluids up to 40 mm²/s (cSt)

State voltage [V] and frequency [Hz]

** C_v-value (US) ≈ k_v-value x 1,2

9152 Solenoid

Standard voltages

DC	AC	
	50 Hz	60 Hz
24 V	24 V	–
–	110 V	120 V
–	230 V	220 V

Design acc. to VDE 0580

Voltage range ±10 %

100 % duty cycle

Protection class acc. to EN 60529 IP65

Socket acc. to DIN EN 175301-803 (included)

Power Consumption

According to VDE 0580 at coil temperature +20 °C. In operating the solenoid coil decrease the power consumption appr. 30 %.

DC	AC	
	Inrush	Holding
10 W	15 VA	10 W

For technical details see catalogue-register "Solenoids"

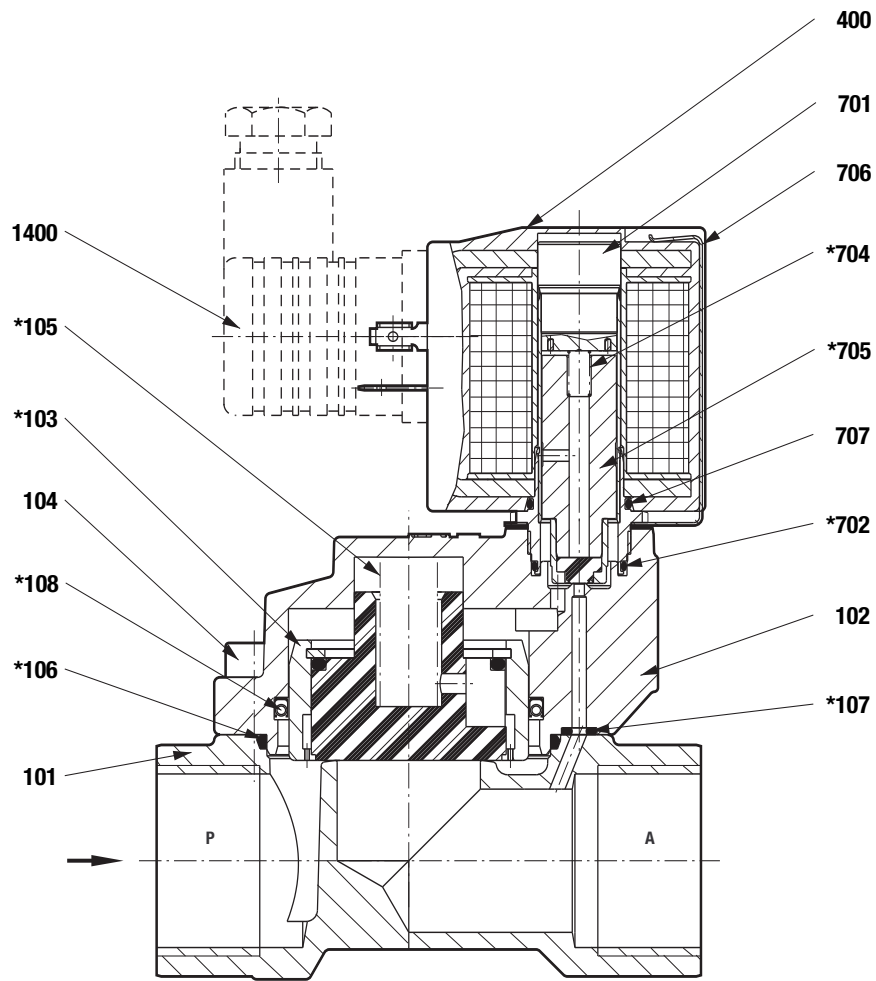
Options (Valves)

XXXXX01.XXXX Normally open (NO),
operating pressure 1 up to 16 bar

XXXXX02.XXXX Manual override

On request Further versions

Section View



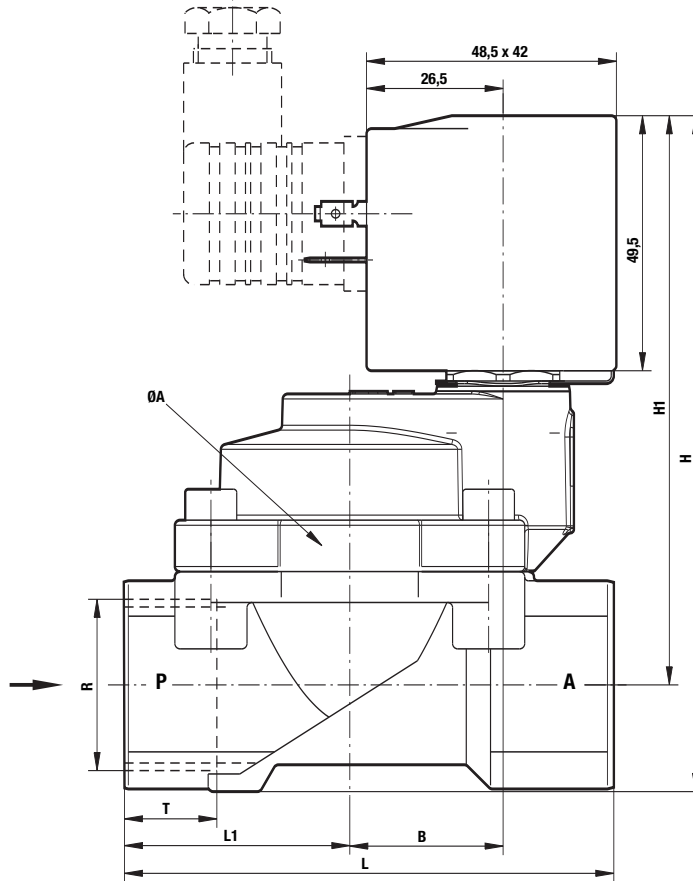
- 101 Valve body
- 102 Valve cover
- *103 Valve piston
- 104 Cheese head cap screw
- *105 Pressure spring
- *106 O-ring
- *107 O-ring
- *108 Grooved ring

- 400 Solenoid
- 701 Core tube
- *702 O-ring
- *704 Pressure spring
- *705 Core
- 706 Spring clip
- 707 O-ring
- 1400 Socket (included)

* These individual parts form a complete wearing unit.
When ordering spare parts please state Cat No and Series No.

General Dimensions

Solenoid rotatable 360°
 Socket turnable 4 x 90°
 (Socket included)



Part Number	Ø A	B	H	H1	L	L1	R	T
8532000.9152 8533000.9152	44	19,5	105,0	93,5	60	27,5	G 1/4 1/4" NPT	12,0 10,0
8532100.9152 8533100.9152	44	19,5	105,0	93,5	60	27,5	G 3/8 3/8" NPT	12,0 10,5
8532200.9152 8533200.9152	44	19,5	107,5	93,5	67	31,0	G 1/2 1/2" NPT	14,0 13,5
8532300.9152 8533300.9152	50	24,0	119,0	102,5	80	36,5	G 3/4 3/4" NPT	16,0 14,0
8532400.9152 8533400.9152	62	29,5	131,5	110,5	95	44,0	G 1 1" NPT	18,0 17,0

Note to Pressure Equipment Directive (PED):

The valves of this series, including the connection-size DN 25 (G 1), are according to Art. 3 § 3 of the Pressure Equipment Directive (PED) 97/23/EG. This means interpretation and production are in accordance to engineers practice wellknown in the member countries.

The CE-sign at the valve refers not to the PED. Thus the declaration of conformity is not longer applicable for this directive.

For valves > DN 25 (G 1) Art. 3 § (1) No.1.4 applies.

The basic requirements of the Enclosure I of the PED must be fulfilled. The CE-sign at the valve includes the PED. A certificate of conformity of this directive will be available on request.

Note to Electromagnetic Compatibility Guideline (EEC):

The valves shall be provided with an electrical circuit which ensures the limits of the harmonised standards EN 50081-1 and EN 50082-1 are observed, and hence the requirements of the Electromagnetic Compatibility Guideline (89/336/EEC) satisfield.