

Ports	Orifice size [mm]	Kv value (air at 1 bar) [l/min]	Differential pressure [bar]		Valve body	Seal	Mass [kg]	Coil type	Model	Order code 230VAC	Fig.
			Min	Max AC							

Closed when de-energised (NC)
SAFETY SHUT-OFF VALVES

G1/2	12	2500	0	0.5	Ms	NBR	0.6	TM35	PV4NC	350491	1
G3/4	18	4100	0	0.5	Ms	NBR	0.8	TM35	PV5NC	350494	1
G1	25	9000	0	0.5	Ms	NBR	1.2	TM35	PV6NC	350493	1
G6/4	40	21000	0	0.5	Ms	NBR	2.4	TM35	PV7NC	350492	1

Open when de-energised (NO)
SAFETY SHUT-OFF VALVES

*	6	750	0	10	Ms	NBR	0.5	TM30	PV3	350496	2
G1/2	12	2500	0	0.5	Ms	NBR	0.4	TM30	PV4	350497	3
G3/4	18	4100	0	0.5	Ms	NBR	0.6	TM30	PV5	350514	3
G1	24	9000	0	0.5	Ms	NBR	1	TM30	PV6	350498	3
G6/4	40	21000	0	0.5	Ms	NBR	2.2	TM30	PV7	350499	3

PV and PVNC valves are to be used with gas detectors exclusively!

Closed when de-energised (NC)
PROCESS VALVES

G1/2	10	1600	0	0.4	Ms	NBR	0.42	TM30	D240	340498	5
	10	1600	0	1	Ms	NBR	0.57	TM35	D240	340704	5
G3/4	18	4100	0	1	Ms	NBR	0.8	TM35	M2521	301697	4
G1	25	9000	0	1	Ms	NBR	1.2	TM35	M2621	301698	4
G6/4	40	21000	0	1	Ms	NBR	2.75	TM40	M275	370810	4

Closed when de-energised (NC)
FOR GAS BOTTLES

*	2	100	0	10	Ms	NBR	0.6	TM30	PL10	350486	2
*	2	100	0	10	Ms	NBR	0.42	TM30	PL3	350488	6

* See drawing!

ORDERING:

Please state order code or consult our staff.
For easier valve choice use QUESTIONNAIRE on page 36.

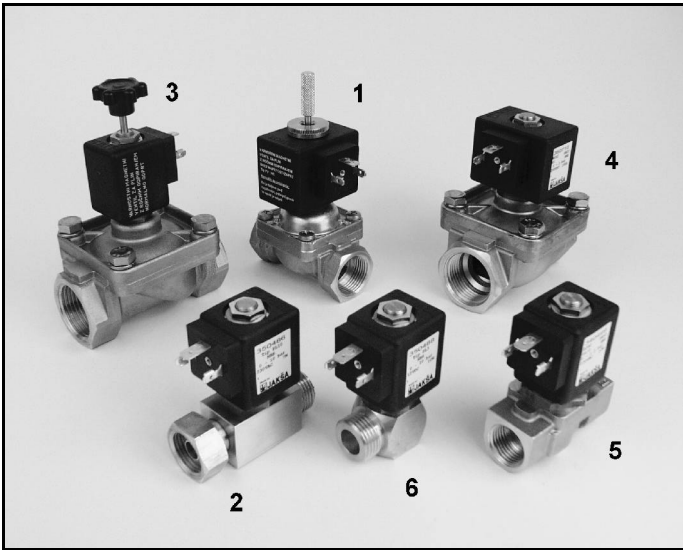
OPTIONS:

- EEx me II explosionproof coils

Other versions on request.
Specifications are subject to change without notice.

TECHNICAL DATA:

Internal parts: stainless steel
Seals: NBR
Fluid temperature: -10°C to +60°C
Ambient temperature: max +50°C
Viscosity: max 21 mm²/s
Response time: closing 10 to 30 ms / manual opening
Voltages: 230, 115, 48, 24 V 50/60 Hz
24, 12 V DC
PV and PVNC 230VAC only
Power consumption: see chapter »Coils«
Duty cycle: continuous (ED100%)
Electrical protection: IP65 (with plug to DIN 43650)



Dimensions [mm]

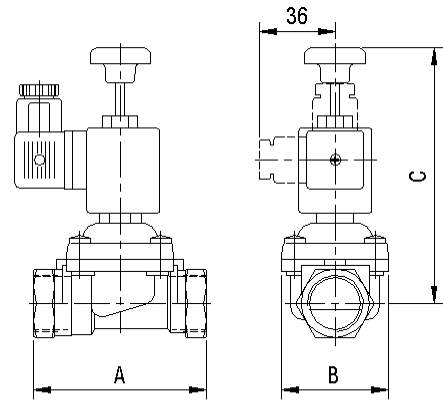
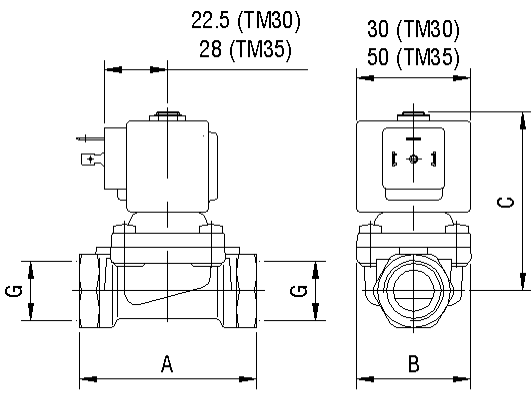


Fig. 1+3

Model	G	A	B	C
PV4 / PV4NC	1/2"	58	41	112
PV5 / PV5NC	3/4"	78	50	115
PV6 / PV6NC	1"	95	70	118
PV7 / PV7NC	6/4"	132	96	145



Model	G	A	B	C
M245	1/2"	58	41	74
M252	3/4"	78	50	80
M262	1"	95	70	86
M275	6/4"	132	96	129

Fig. 4

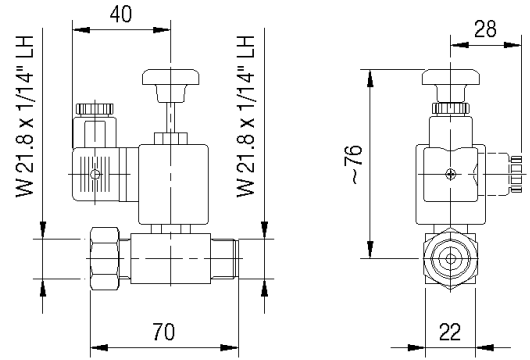


Fig. 2

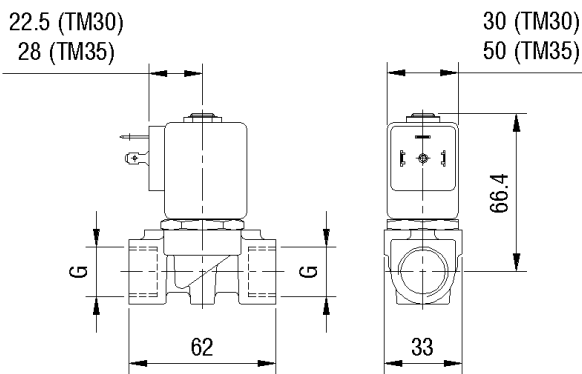


Fig. 5

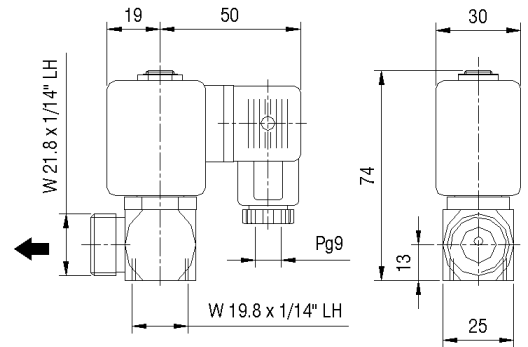


Fig. 6